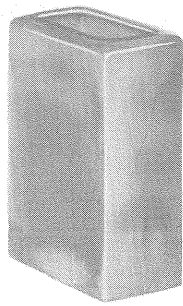
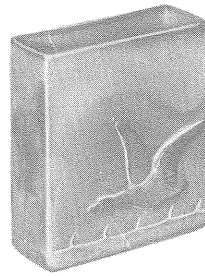


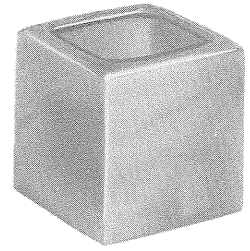
6



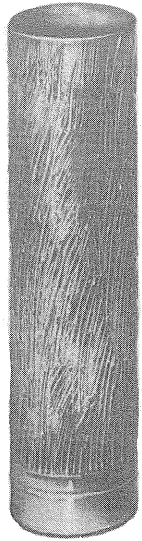
63



60 B



68



9



11



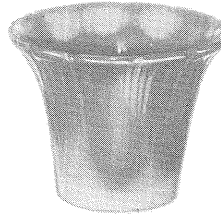
A 4



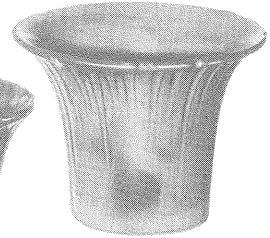
A 5



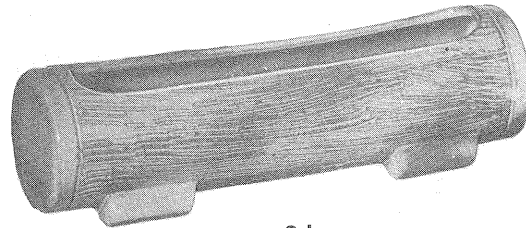
A 6



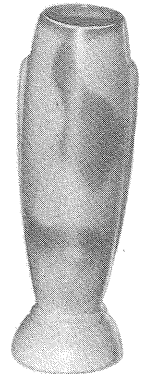
A 7



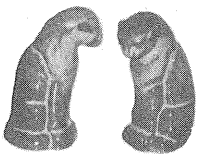
A 8



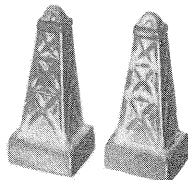
9L



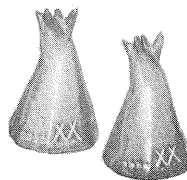
43



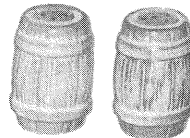
165 H



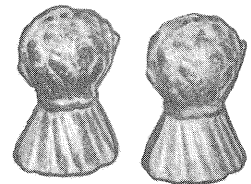
49 H



47 H



97 H



48 H

6—free form vase, 7"	1.50
9—tall textured vase, 10"	2.00
9L—low textured bowl, 10"	2.00
11—textured vase, 6"	1.00
63—pillow vase, 7"	1.50
68—cube vase, 5"	1.50
43—large bud vase, 8"	1.00
60b—goose vase, 6"	1.50
A4—4" glazed pot40

A5—5" glazed pot60
A6—6" glazed pot80
A7—7" glazed pot	1.00
A8—8" glazed pot	1.50
47h—teepee salt and peppers, pair80
48h—shock of wheat salt and peppers, pair80
49h—oil derrick salt and peppers, pair80
97h—barrel salt and peppers, pair80
165h—cat salt and peppers, pair80

THIS PAGE AVAILABLE IN PRAIRIE GREEN, DESERT GOLD, ONYX BLACK,
CLAY BLUE, WHITE SAND, SORGHUM BROWN AND RED BUD